

Welcome to The LINC's Virtual Back to School Night & Title 1 / SAC Meeting

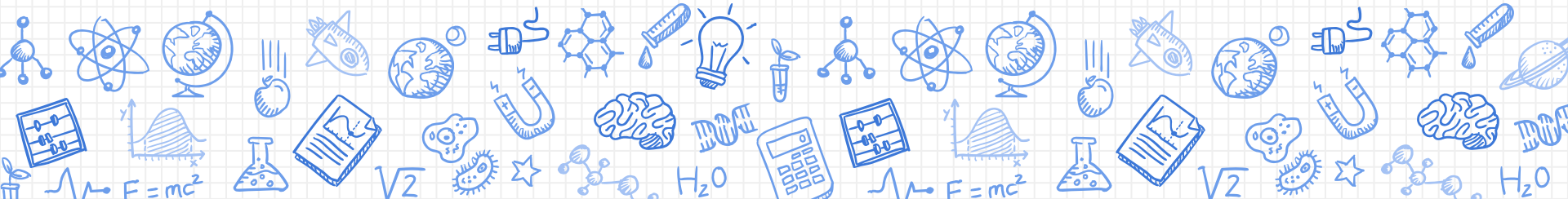
Ms. Bujak, *Principal*
Wednesday, September 30, 2020
5PM - 6PM

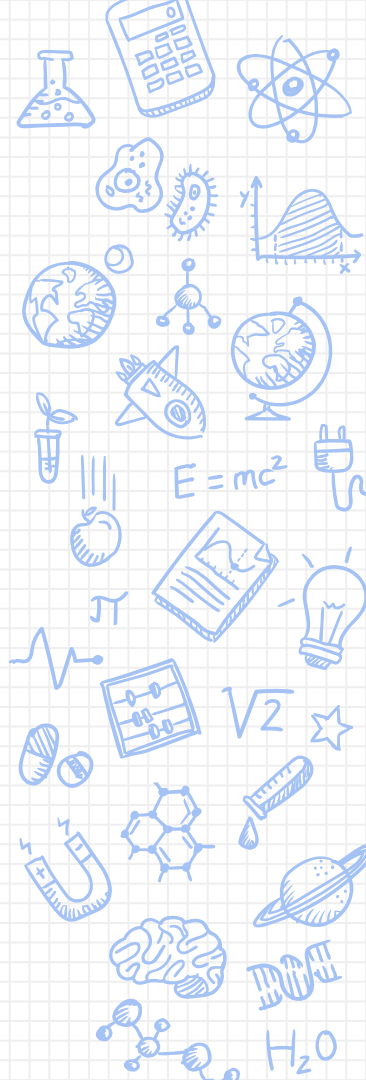


-

Your Student's Attendance Matters.

School Schedule for Virtual Learning





Virtual Learning Schedule for M, T, W, and Th

Times	Class	Minutes
10:00am - 11:10am	First Block	70
11:10am - 11:20am	Computer Break	10
11:20am - 12:30pm	Second Block	70
12:30pm - 1:00pm	LUNCH Computer Break	30
1:00pm - 1:30pm	Seminar	30
1:30pm - 1:40pm	Computer Break	10
1:40pm - 2:50pm	Third Block	70



Virtual Learning Schedule for FRIDAYS

Times	Class	Minutes
9:00am - 9:50am	First Block	50
9:50am - 10:00am	Computer Break	10
10:00am - 10:50am	Second Block	50
10:50am - 11:00am	Computer Break	10
11:00am - 11:50am	Third Block	50
11:50am - 2:50pm	<ul style="list-style-type: none">- Classes end for the school day @ 11:50am.- No Seminar on Fridays- Students have specific homework assignments for Friday afternoons. They are listed on their ECHO agendas.	

First Quarter Interim Reports

- Interim Reports will be generated on Monday, October 21, 2020.
- Parents and guardians will receive their student's interim report by Wednesday, October 23, 2020.

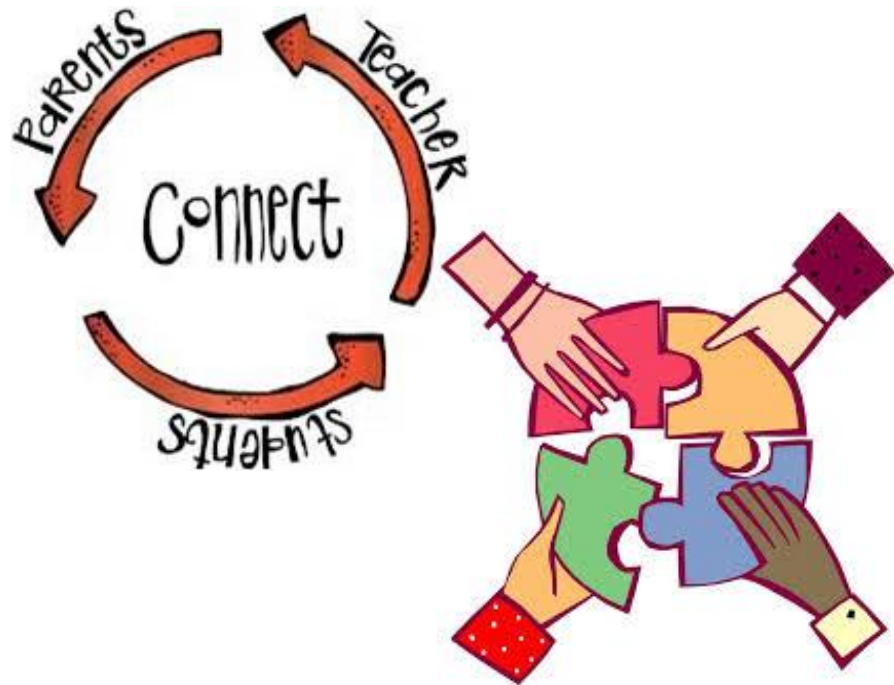
WHAT IS TITLE I?

- The federal government provides Title I funding to states each year. These funds are disseminated to each School District (LEA). The District is then responsible for distributing these funds to all our schools based on two criteria:
 - Formula based on low-income status
 - Title I School Designation
- Each Spring during the budget process, our school decides how best to use our Title I funds based on a needs assessment with the guidance of school leadership, parents and community members.



OUR SCHOOL NEEDS YOUR HELP EACH SPRING TO WORK WITH SCHOOL STAFF AND DEVELOP:

- The Parent and Family Engagement Policy
- The School-Parent Compact
- The Schoolwide Plan
- The School Budget



SCHOOL DISTRICT OF PHILADELPHIA PARENT AND FAMILY ENGAGEMENT POLICY

- The School District of Philadelphia, with the input of parents, develops a written, district-wide Parent and Family Engagement Policy.
- If you are interested in providing suggestions and/or recommendations at the District level, please contact your school's Family Engagement Liaison or the Office of Family and Community Engagement
- (215-400-4180).



SCHOOL-BASED PARENT AND FAMILY ENGAGEMENT POLICY

- Discusses how:
 - We will involve parents in the process of school review and improvement
 - We will provide the necessary technical assistance to parents that will support and improve student academic achievement
 - We will build parents' capacity for strong parental involvement to improve student academic achievement
 - Parents are involved in the development, evaluation and revision of the Parent and Family Engagement Policy



SCHOOL-PARENT COMPACT

- The Compact states the goals and responsibilities of the school in providing a quality education to all students and identifying interventions for students who are struggling academically.
- The Compact states the responsibilities of parents and students in helping the school to meet these goals.

TITLE I SCHOOL DESIGNATIONS

- In Pennsylvania, all schools are given a designation of Comprehensive Support and Improvement (CSI), Targeted Support and Improvement (TSI), Additional Targeted Support & Improvement (ATSI) or Non-Designated, based on school performance measures:
 - These include the state's academic standards and assessments (PSSA/Keystones)

Our School Designation is: (CSI)
Comprehensive Support & Improvement

SCHOOL BUDGETS AND SET-ASIDE REQUIREMENTS

- Title I expenditures must support the school's core academic program to ensure a well-rounded education. They should be aligned with the Schoolwide Plan.
 - Parents must be involved in the discussions regarding how these funds will best support improving academic achievement.
- 1% set aside for Parent and Family Engagement
 - Parents must be involved in the discussions regarding how these funds will best support them in working with their child at home to improve achievement.

SCHOOL TITLE I SPENDING

- Our School plans to spend this year's Title I funds on:
 - Climate Support Positions
 - 2 Humanities Teachers
- Our School plans to spend this year's Parent funds on:
 - Family handbooks (printed)
 - Our LINC Book Club for parents and students

TEACHER & PARAPROFESSIONAL QUALIFICATIONS

- **Appropriately State Certified Teachers:**

- Certified by passing state examination (PRAXIS)
- BA degree
- Area of certification must match the teaching assignment

- **To be hired, all paraprofessionals must be Appropriately State Certified:**

- Completed two years of higher education study, OR
- Hold an Associate Degree, OR
- Pass a rigorous, formal assessment



RIGHT TO KNOW QUALIFICATIONS

- You have the right to request the qualifications of your child's teacher and any instructional paraprofessionals that work with your child.
-
- To learn the qualifications of these staff members, please make an appointment with the principal.

STATE ACADEMIC STANDARDS AND ASSESSMENTS

- Our State Assessments are:
 - Keystone
 - WIDA
- During report card conferences, your child's teacher will discuss the State's academic content standards.

OUR SCHOOL NEEDS YOU!

- ★ Learn about our **Title I** program and review documents in our Title I binder located in the main office (available by request during closure)
- ★ Take advantage of what **Title I** has to offer
- ★ Get involved in your child's education
- ★ Join the School Advisory Council(SAC)



You, your child, and our school can be a winning team!



Ms. Bujak

Proud Principal of The LINC

bjbujak@philasd.org

“Education is the passport
to the future, for tomorrow
belongs to those who
prepare for it today.

~ Malcolm X



Mrs. Torres



Assistant Principal

- ★ rmtorres@philasd.org
- ★ Former School Counselor, 10 years
- ★ I enjoy working with high school students, staff, and parents





Mr. Arroyo

parroyo@philasd.org

Health/PE & Senior
Advisor

Fun Fact about PE-
Every Tuesday and
Thursday might be a little
noisy in the house due to
the workouts we do.

MR. CENEVIVA

email: jceneviva@philasd.org

Subject: Mathematics.

Currently teaching Geometry

Extra help upon request.

Will be starting an
after-school club for
programming in Python or
Scratch.





Media Arts

Journalism

Fun Fact: I love flying drones

Contact: jdeutsch@philasd.org

Mr Deutsch



Name: Mrs. Pouneh Emery

Email: pemery@philasd.org

Education: BA English
Rutgers University

MS Secondary Education
Saint Joseph's University (in progress)

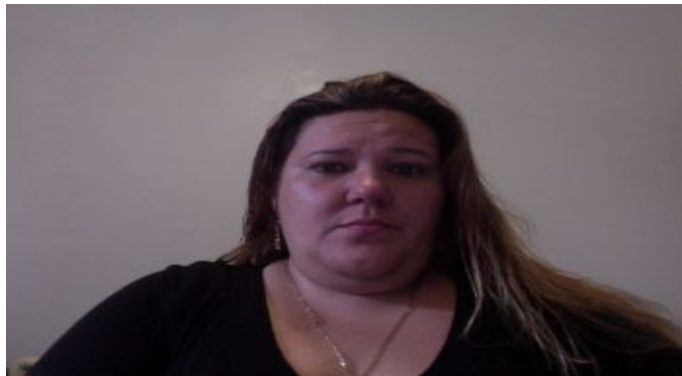
What I Teach: Freshman Seminar, Social Sciences & English 10th-12th

Fun Fact: I love to knit & crochet or do anything “crafty”

What I’m Looking Forward to: I am excited to work with returning students and get to know new students better, as they all make my days brighter.

Projects on the Horizon: Election 2020!!!

Quote: “Stop acting so small- you are the universe in ecstatic motion” -Rumi



Jennifer Gerena

Dean of Students

I have been with the district over 16 years. I help provide a safe learning atmosphere.

I love working with students and families to provide additional assistance and guidance.

Although I am one of your deans, I am very understanding, and try to work with you to overcome any situation that may arise.



Mr. Donnat Grillet-dgrillet@philasd.org
Humanities Teacher- 9th Grade
Die Hard Sports Fan
Geography/Map Geek
Assistant Poetry Slam Coach

Looking forward to having fun with the Freshmen as they adjust, grow, become informed citizens and move on to the 10th grade.





Ms. Guilfoyle

Email: eguilfoyle@philasd.org

- I am a *Freshman Seminar* teacher and Advisor
 - I teach *Algebra 2* and *Geometry* this year
 - Our goal in math class is to provide *real-world connections* to the concepts that we are learning together.
 - So far we've represented important facets of ourselves as the 5 **Platonic Solids** in Geometry and learned to **analyze how weights impact averages** and our view of our grades in Algebra 2.
-

**HELLO MY NAME IS MRS. GUNDY
I AM A SPECIAL EDUCATION TEACHER.
KGUNDY@PHILASD.ORG**



**I CO-TEACH ENVIRONMENTAL SCIENCE AND SPANISH.
I AM RE-LEARNING SPANISH THROUGH NEARPOD AND KAHOOT5
WITH MR. MELECIO'S CLASS.**

Ms. Haynes

- *Humanities/Special Education*
- lhaynesjacobs@philasd.org
- *Fun fact about my course:*
--We play kahoot to learn and reinforce some of the topics we cover in class.



Joshua Maroney

- Graduated from Temple University
- Teach Environmental Science and Biology
- In class we are reading the book MEG!
- I have twin 3 ½ year old boys!

jmaroney@philasd.org



Mr. Melecio



- Spanish 1 & 2
- jmelecio@philasd.org
- Students will be focusing on learning Spanish through reading, writing and listening by using topics that are personalized and of high interest.

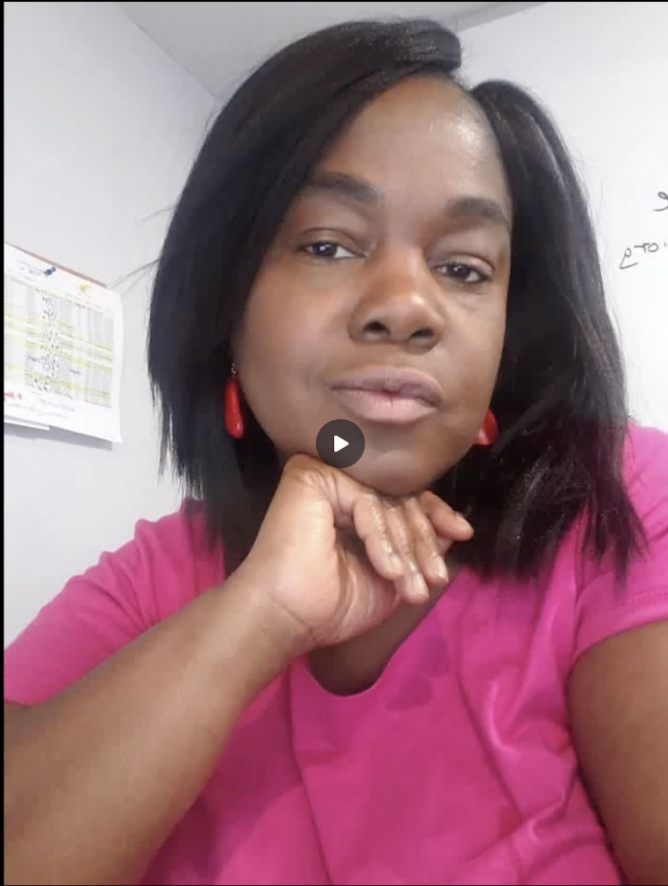
The LINC Secretary



Mrs. Jessica Miller

You can contact me at jnotis@philasd.org

Ms. Marguerite Pierre



"HISTORY, DESPITE ITS
WRENCHING PAIN, CANNOT
BE UNLIVED, BUT IF FACED
WITH COURAGE, NEED NOT
BE LIVED AGAIN."

- MAYA ANGELOU

Special Education Compliance Monitor



Mr. Roland Ratnum

I teach Chemistry & ELL.

I love the ocean and the forest.



I speak, write & read the oldest language in the World, Tamil.

Mrs. Thomas

Dean of Students

I look forward to getting to know you all. Please feel free to contact me with questions and/or concerns.

Email: tthomas2@philasd.org





Ms. Underwood



tmurphy2@philasd.org



Survey of Writing teacher



12th grade advisor



Slam Poetry Coach (Zoom meetings every Thursday from 3:30-4:30! Join us!)



I'm looking forward to all the creative stories, poems, speeches, and scripts my students will come up with this school year!



Mr. Vallejo

Email: rvallejo@philasd.org

Content Specialty: History/Social Science & English

Fun Fact about Class: Even though I majored in History, I am really into Futurism (the projected outcomes of the Future) and love to incorporate these topics into my lessons.

Projects I'm looking forward to: Going over Election Issues important in 2020.



Suzanne Walsh

swalsh@philasd.org

- Art 1
- Art 2

We just finished a unit on photography and the importance of telling our stories with images.

We are starting a unit on drawing that will end with a poster on voting.



English Language Learners



English Language Learners

Mr. Ratnum



Learning Strategies are used
to empower students to learn and
practice the language of English in the **4**
domains (Reading, Writing, Speaking &
Listening)

Outcome :

This results in a positive expectation in
students that tend to excel in the learning of
the language.

Learning Strategies.....



1. Planned vocabulary instructions - This emphasis on usage of gestures, visual clues that triggers prior knowledge of their first language to relate to the current vocabulary/text learning.
2. To develop the skills in the 3 domains of Reading, Listening, Speaking - students are provided guided rooms for 'Structural Conversations' to practice in small groups or with their peers. This is not limited to reading materials, videos, audios, discussing topics of the text, discussing topics of interest and educational games (ICivics).

Strategies.....



3. Writing, students are provided with “Research Based Opportunities’, to sharpen their skills in producing a grammatical error free paragraph/page.
4. Technology - The use of smartphones has become an inevitable part of today’s learning process, so to encourage learning, assignments of reading are aligned to suite this requirement. (Newsela, ducksters, cnn10...)
5. Differentiated teaching is adapted to meet the different students’ needs followed by a regular feedback.

Special Education at The LINC

DIGITAL/HYBRID SERVICE DELIVERY PLAN



— 01

The School District of Philadelphia helps students with disabilities get diverse supports and services to meet individual learning needs. In compliance with the Individuals with Disabilities Education Act and the Pennsylvania School Code, the District provides an appropriate educational program designed to meet each student's unique needs and to support academic, social and emotional growth.

just
breathe



Organize all that paperwork.

Start a communication log.

Review your child's current IEP.

Relieve back-to-school jitters.

Keep everyone informed.

Establish before- and after-school routines.

Stay up to date on special education news.

Attend school events.

SUPPORTS- SERVICES @THE LINC

OVERVIEW OF THE SERVICES

Learning support – for children whose greatest need of support is in the areas of reading, writing, math, or speaking or listening related to academics

Emotional support – for children whose greatest need is for social, emotional, and behavioral help.

Speech Language Therapy

Occupational Therapy

Behavioral / Counseling Support

Co-Teaching / Instructional Support





SPECIAL EDUCATION TEAM

THE LINC H.S.



MARGUERITE PIERRE

Special Education
Compliance Monitor-
SPECM
mpierre@philasd.org



LISA HAYNES-JACOBS

Special Education Case Manager-
Humanities teacher
lhaynesjacobs@philasd.org



KAREN GUNDY

Special Education Case Manager
Math/Science Support
kgundy@philasd.org



The LINC's School Counseling Program

I am your school counselor, Mr. Pinckney. I am excited to work with you this year!

You can contact me at lpinckney@philasd.org and/or call me at 215-400-3940.

If you would like to make an appointment, click the link ->->

<https://calendly.com/lpinckney>

The Importance of Attendance

Why does it matter?

What is our goal?

What is Tier 1, 2, & 3?





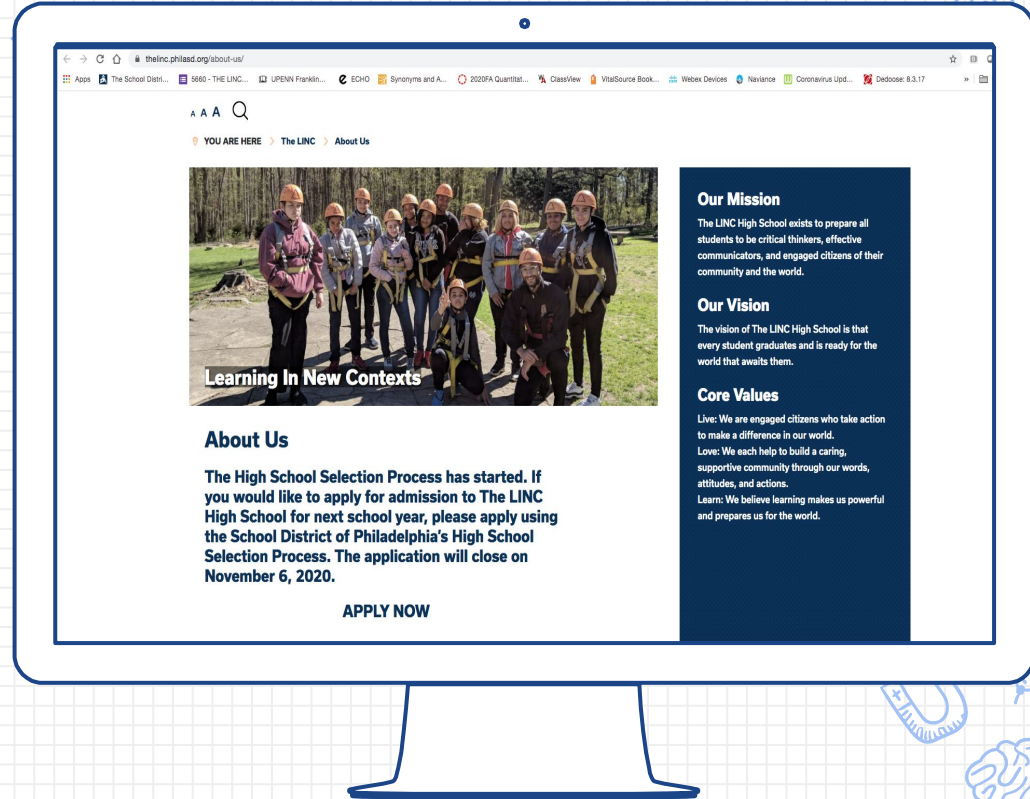
The College Board

- ✗ The **College Board** develops and administers standardized tests (PSAT/SAT).
- ✗ Each student will create an account with College board in the upcoming days;
www.collegeboard.org
- ✗ Students will register for their SAT in their college board account.
- ✗ Students will have access to their scores after testing which will be sent to handpicked colleges.
- ✗ Currently, due to the pandemic, The School District of Philadelphia will not give the SAT exam in school this year. You will have to go to a SAT testing site outside of the District.
- ✗ Students will receive 2 fee waivers that will be uploaded into their college board account.
- ✗ Here's the link for testing dates and deadlines:
<https://collegereadiness.collegeboard.org/sat/register/dates-deadlines>

Continually Check-in with our School Website

Important
information is
updated on our
school website.

- School schedule
- Contact information for faculty & staff
- Follow-up with College and Career Readiness Next Steps



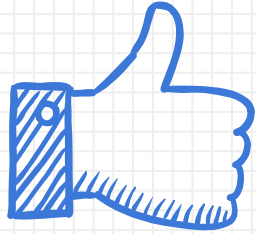
ECHO Parent Portal

Want to know
about your
student's grades
and what s/he is
learning?

Get a parent
portal account!



Email our secretary, jnotis@philasd.org,
with your student's name.



THANKS for joining us!

Any questions?

Please don't forget to virtually sign-in and fill out the survey! These links are located in the chat.

- ✗ Email: bjbujak@philasd.org
- ✗ Phone: (215) 400-3940